

PLANTA TIPO

**VIVIENDA UNIFAMILIAR PAREADA 36m<sup>2</sup>**  
**USOS Y SUPERFICIES**

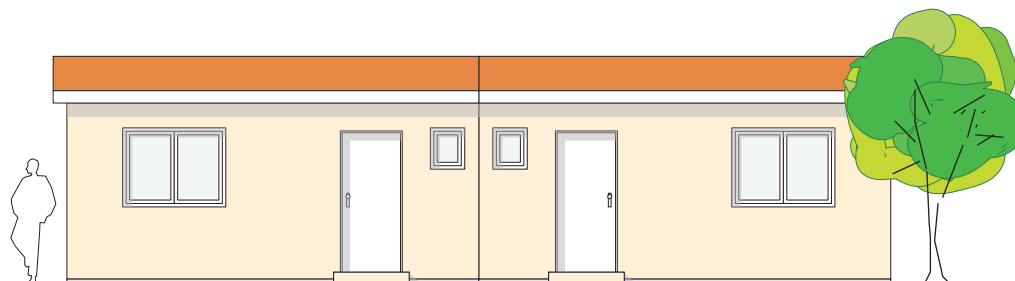
**BSCP**

BUILDING SYSTEM with CONCRETE PANEL S.L.

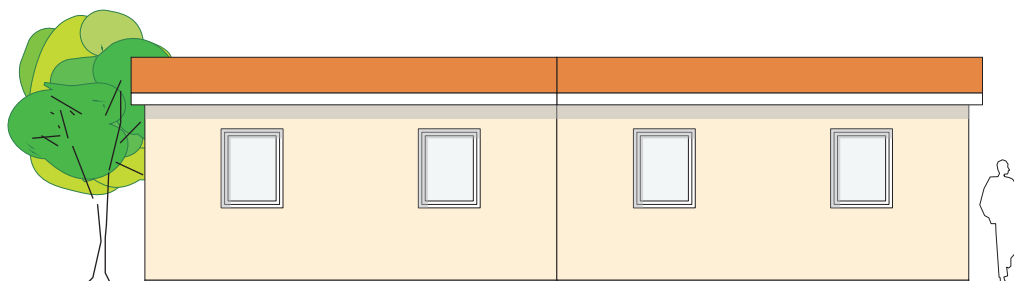
www.bscp.es ■ e-mail: madrid@bscp.es

C/ Ave del Paraiso n°6  
 28023 Aravaca ■ Madrid ■ España

Tel: (34) 91 357 51 68  
 Fax: (34) 91 357 51 67



**Alzado Frontal**



**Alzado Posterior**

**VIVIENDA UNIFAMILIAR PAREADA 36m<sup>2</sup>**  
**ALZADOS**

**BSCP**

BUILDING SYSTEM with CONCRETE PANEL S.L.

www.bscp.es ■ e-mail: madrid@bscp.es

C/ Ave del Paraiso n°6  
28023 Aravaca ■ Madrid ■ España

Tel: (34) 91 357 51 68  
Fax: (34) 91 357 51 67